



**2312 E 2nd St
Anderson, IN 46012**

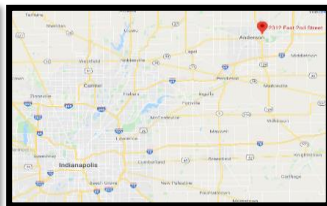


Price \$134,900

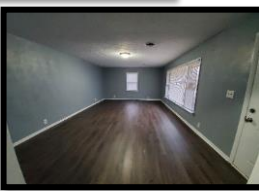
	Cash	50% Financing	75% Financing	80% Financing
Sales Price	\$134,900	\$134,900	\$134,900	\$134,900
Mortgage Amount		\$ 67,450	\$ 101,175	\$ 107,920
Down Payment	\$ 134,900	\$ 67,450	\$ 33,725	\$ 26,980
Closing Cost Estimates	\$ 1,000	\$ 2,024	\$ 3,035	\$ 3,238
Total Projected Cash to Close	\$ 135,900	\$ 69,474	\$ 36,760	\$ 30,218
Projected Principal and Interest Payment		\$ (332)	\$ (498)	\$ (531)
Projected Property Taxes	\$ (141)	\$ (141)	\$ (141)	\$ (141)
Projected Monthly Insurance	\$ (60)	\$ (60)	\$ (60)	\$ (60)
Projected Monthly Homeowners Association Dues	\$ -	\$ -	\$ -	\$ -
Management fees - (9%)	\$ (108)	\$ (108)	\$ (108)	\$ (108)
Projected Vacancy Rate - (5%)	\$ (60)	\$ (60)	\$ (60)	\$ (60)
Projected Deferred Maintenance - (5%)	\$ (60)	\$ (60)	\$ (60)	\$ (60)
Projected Total Costs	\$ (429)	\$ (761)	\$ (927)	\$ (960)
Projected Income	\$ 1,200	\$ 1,200	\$ 1,200	\$ 1,200
Projected Cash Flow	\$ 771	\$ 439	\$ 273	\$ 240

Estimated interest rate 4.25%

Annual Cash Flow Projections \$ 9,252.00 \$ 5,270.24 \$ 3,279.36 \$ 2,881.18



Projected Income Range \$1125-\$1225/mo
(Income used in pro-forma - \$1200/mo)



Square feet	1254
Bedrooms	3
Bathrooms	1
Year Built	1956
Garage	2/CA



Any prices and other information contained herein are assumptions and estimates. Each purchaser must make their own purchasing decisions based on their own due diligence.

**Past performance is no guarantee of future results.

***Taxes shown are estimates. Tax amounts are subject to change based on property tax exemptions filed, transfers of subject property, assessed valuation changes, and other factors as determined by the local taxing authority. Please consult with the county tax assessor's office for most current information to determine tax amounts.

****Maintenance and Vacancy assumptions of 5% are based on historical averages and will vary by property. This is the minimum suggested projection clients should make when making purchasing decisions.

